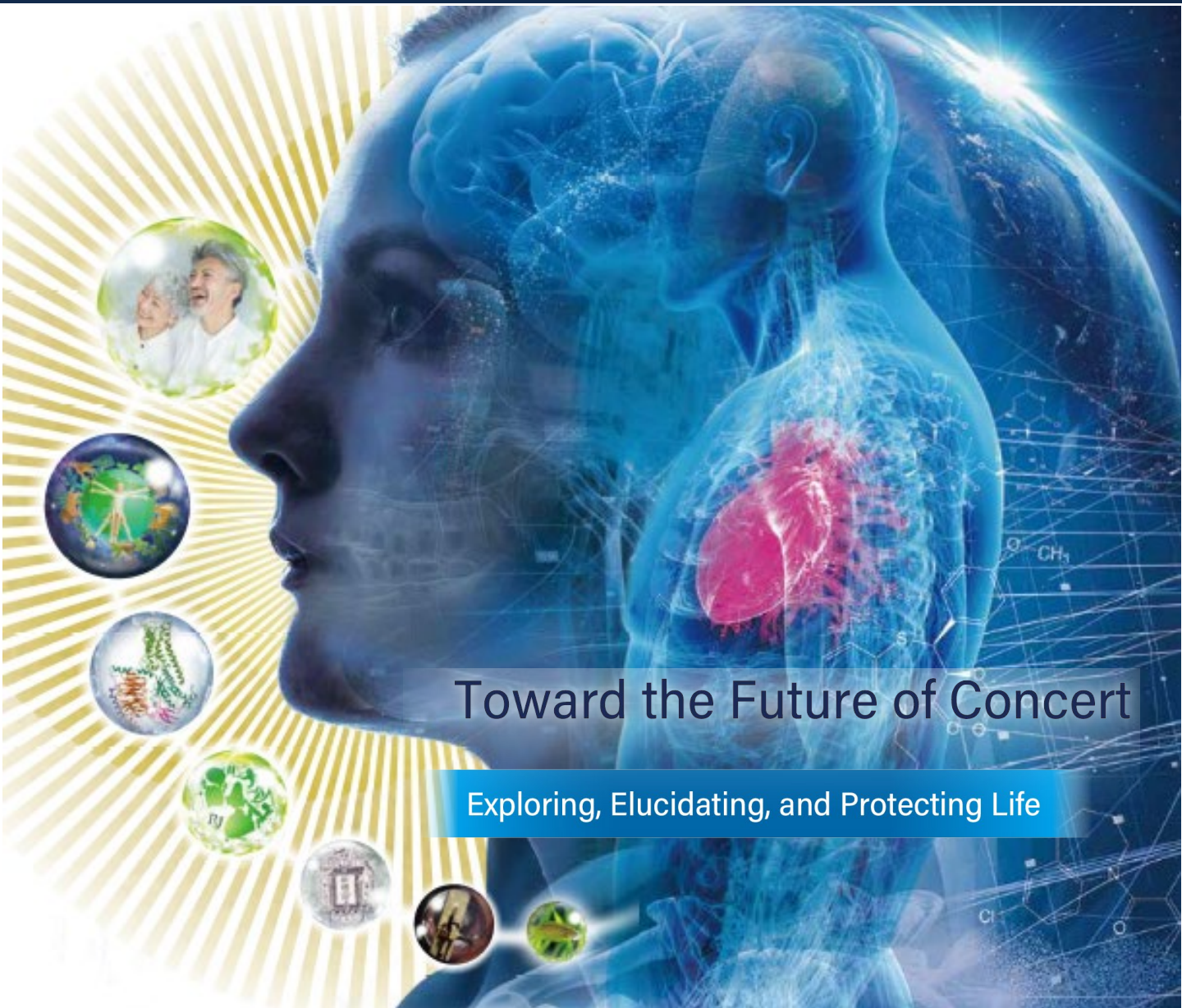


APPW2025

The 130th Annual Meeting of the Japanese Association of Anatomists (JAA) · The 102nd Annual Meeting of the Physiological Society of Japan (PSJ) · The 98th Annual Meeting of the Japanese Pharmacological Society (JPS)



Toward the Future of Concert

Exploring, Elucidating, and Protecting Life

Sponsorship Prospectus

APPW2025 Sponsorship Secretariat (c/o A&E Planning Co., Ltd.)

6F, Shin-Osaka Grand Bldg., 2-14-14, Miyahara, Yodogawa-ku, Osaka 532-0003, JAPAN

E-mail : e_appw2025@aeplan.co.jp

Greetings

The Japanese Association of Anatomists, the Physiological Society of Japan, and the Japanese Pharmacological Society are the oldest academic organizations in basic medicine that represent Japan, and each has a long history of academic activity. In the past, there have been joint conferences for anatomy and physiology (2011, 2015, 2021) and for physiology and pharmacology (2003), but this will be the first time that the three academic societies will jointly hold a conference. It all started when Yoshihiro Ishikawa, the former president of the Physiological Society of Japan (Yokohama City University), suggested that a joint conference of many basic medical societies, like FASEB in the United States, could be held in Japan. When the coronavirus pandemic COVID-19 spread across the country in 2020, he appealed to the President of the Japanese Association of Anatomists, Hiroyuki Yaginuma (Fukushima Medical University), and the President of the Japanese Society of Pharmacology, Kazuhiko Yanai (Tohoku University). The following year, at an online meeting also attended by Watanabe, Naruse, and Adachi-Akahane, who were or were scheduled to become the next Presidents, it was decided to hold a joint conference in 2025. One of the things we agreed upon at that time was that the board directors of each academic society should be involved in the joint conference. The aim is not to make this joint conference a one-off fireworks display, but to continue to improve and develop research and education capabilities in the field of basic medicine, and to make it a vibrant place for the development of young researchers. Happily, the number of basic science academic societies that sympathize with this aim is increasing.

The theme of this joint conference of three academic societies (English name: Anatomy-Physiology-Pharmacology Week in 2025, abbreviated as APPW2025) is “Toward the Future of Concert – Exploring, Elucidating, and Protecting Life.” Through interdisciplinary cooperation centered on the three academic societies, we will explore the mechanism of maintaining homeostasis in individuals through the cooperation of cells and organs, as well as the diversity and sustainability of life through cooperation between individuals and the environment, and aim to create a healthy future society. It embodies our desire to achieve this goal. The subtitle, “Exploring, Solving, and Protecting Life,” explores the characteristics of each academic field by exploring life from a structural perspective (anatomy) and from a functional perspective (physiology), and developing ways to protect life (pharmacology). The covers and poster designs of the program collection incorporate the idea of realizing One Health, which focuses on the principles of the structure and function of the human body, and considers the protection and health of all living things and the health of the earth and space environment as one. In addition, the spiral pattern behind the human body and One Health is inspired by the Anatomy Department of the University of Padua (Teatro Anatomico) and the medical researchers who spread their wings around the world from there.

Due to the COVID-19 pandemic that broke out at the end of 2019, the holding way of academic conferences has been affected greatly, including holding them in print, online, and hybrid. In light of the current social situation and keeping a close eye on future trends including other infectious diseases, we are proceeding with preparations for APPW2025 to be held face-to-face at Makuhari Messe. We hope that as many people as possible will come to the local venue and enjoy the scale merit and chemical reactions that can only be achieved through this joint conference.

130th General Meeting of
the Japanese Association of
Anatomists
Masahiko Watanabe
Hokkaido University

102nd General Meeting of
the Physiological Society of
Japan
Keiji Naruse
Okayama University

98th Annual Meeting of
the Japanese Pharmacological
Society
Satomi Adachi-Akahane
Toho University

Outline

Name

APPW2025

The 130th Annual Meeting of the Japanese Association of Anatomists (JAA)

The 102nd Annual Meeting of the Physiological Society of Japan (PSJ)

The 98th Annual Meeting of the Japanese Pharmacological Society (JPS)

Theme

Toward the Future of Concert

– Exploring, Elucidating, and Protecting Life.

Dates

March 17 – 19, 2025

Venue

Makuhari Messe (International Conference Hall, International Exhibition Hall)

Expected number of participants

4,000

Supported by

The Japanese Society of Pathology

The Japanese Biochemical Society

The Japanese Society for Immunology

The Japanese Cancer Association

The Japan Neuroscience Society (Tentative)

The Japanese Society for Neurochemistry (Tentative)

The Japanese Society of Toxicology (Tentative)

Presidents

JAA: Masahiko Watanabe (Hokkaido University)

PSJ: Keiji Naruse (Okayama University)

JPS: Satomi Adachi-Akahane (Toho University)

Advisory Board

JAA

Shigeo Okabe (The University of Tokyo), Toyoshi Fujimoto (Juntendo University),
Yasuo Uchiyama (Juntendo University)

PSJ

Atsuo Fukuda (Hamamatsu University School of Medicine), Yoshinori Marunaka (Kyoto Industrial Health Association)
Akira Takai (Asahikawa Medical University)

JPS

Akinori Akaike (Kyoto University), Masamitsu Iino (The University of Tokyo)
Shu Narumiya (Kyoto University), Kazuhiko Yanai (Sendai Shirayuri Women's College)

Organization Committee

JAA

Kazunori Nakajima (Keio University), Sumio Terada (Tokyo Medical and Dental University (TMDU)),
Hiroyuki Yaginuma (Fukushima Medical University)

PSJ

Satoshi Mohri (Kawasaki Medical School), Junya Tanaka (Ehime University),
Masahiro Yamaguchi (Kochi University)

JPS

Hitoshi Hashimoto (Osaka University), Yoshikatsu Kanai (Osaka University),
Yasunari Kanda (National Institute of Health Sciences), Shuji Kaneko (Kyoto University),
Schuichi Koizumi (Univ Yamanashi), Hiroki Ueda (The University of Tokyo),
Yasuhiro Uezono (The Jikei University School of Medicine)

Executive Committee

Executive Committee Chair & Financial Chair

Naohiko Anzai (Chiba University)

JAA

Kaoru Goto (Yamagata University), Hiroyuki Hioki (Juntendo University),
Yuji Owada (Tohoku University), Hiroyuki Sakagami (Kitasato University),
Miwako Yamasaki (Hokkaido University)

PSJ

Atsushi Fujimura (Okayama University), Mizuho Kido (Saga University),
Hiroko Kishi (Shimane University), Dai Mitsushima (Yamaguchi University),
Utako Yokoyama (Tokyo Medical University)

JPS

Naohiko Anzai (Chiba University), Kenzo Hirose (The University of Tokyo),
Yuji Ikegaya (The University of Tokyo), Keiji Kuba (Kyushu University),
Junko Kurokawa (University of Shizuoka), Masabumi Minami (Hokkaido University)

Program Committee

Chairs

JAA

Nobuhiko Ohno (Jichi Medical University)

PSJ

Hiroshi Hibino (Osaka University)

JPS

Motohiro Nishida (Kyushu University, Vice President of the 98th Annual Meeting of the Japanese Pharmacological Society (JPS))

Vice Chairs

JAA

Yugo Fukazawa (University of Fukui), Hiroaki Wake (Nagoya University)

PSJ

Takeshi Hiyama (Tottori University), Gentaro Iribe (Asahikawa Medical University)

JPS

Tomoyuki Furuyashiki (Kobe University), Masaru Ishii (Osaka University)

Members

JAA

Otto Baba (Tokushima University), Hideki Enomoto (Kobe University), Yuki Fujita (Shimane University), Masashi Fujitani (Shimane University), Ken Fujiwara (Kanagawa University), Hiromasa Funato (Toho University), Takahiro Furuta (Osaka University), Shogo Hayashi (Tokai University), Hiroyuki Hioki (Juntendo University), Yasukazu Hozumi (Akita University), Koichiro Ichimura (Juntendo University), Kazuo Ikeda (Osaka Metropolitan University), Koji Ikegami (Hiroshima University), Tetsufumi Ito (University of Toyama), Makoto Kondo (Osaka Metropolitan University), Hiroyuki Konishi (Nagoya University), Ken-ichiro Kubo (The Jikei University School of Medicine), Yoshiaki Kubota (Keio University), Kazuki Kurimoto (Nara Medical University), Shingo Miyata (Kindai University), Yoshihiro Morikawa (Wakayama Medical University), Hirotaka Nagai (Kobe University), Tomohito Nagaoka (Aomori Public University), Ayako Nakamura-Ishizu (Tokyo Womens Medical University), Ryo Nitta (Kobe University), Toshiyuki Oda (University of Yamanashi), Shinsuke Ohba (Osaka University), Masataka Okabe (The Jikei University), Yasushi Okada (RIKEN), Hirotaka Sakamoto (Okayama University), Mitsutoshi Setou (Hamamatsu University), Masahiro Shibata (Kagoshima University), Yasufumi Shigeyoshi (Kindai University), Yoshiaki Shinohara (University of Yamanashi), Kazuo Takahashi (Fujita Health University), Yasuhiro Tanaka (Tamagawa University), Tatsuhide Tanaka (Nara Medical University), Motokazu Uchigashima (Niigata University), Satoshi Waguri (Fukushima Medical University), Koichi Watanabe (Kurume University), Miwako Yamasaki (Hokkaido University), Toshihide Yamashita (Osaka University), Kenta Yashiro (Kyoto Prefectural University of Medicine)

PSJ

Chikara Abe (Gifu University), Tenpei Akita (Hamamatsu University), Yuichiro Fujiwara (Hiroshima University), Kazuharu Furutani (Tokushima Bunri University), Kenji Hanamura (Niigata University of Health and Welfare), Yu Hayashi (University of Tokyo), Tsuyoshi Inoue (Nagasaki University), Ayumu Inutsuka (Jichi Medical University), Minami Ito (Tokyo Medical and Dental University (TMDU)), Hiroshi Kaji (Kindai University), Sho Kakizawa (Kyoto University), Makiko Kashio (Div. Cell Signaling, NIPS), Yuki Katanosaka (Kinjo Gakuin University), Satoshi Koba (Tottori University), Norika Liu (The Jikei University School of Medicine), Satoshi Matsuoka (University of Fukui), Masanori Matsuzaki (The University of Tokyo), Michihiro Mieda (Kanazawa University), Masayuki Mori (University of Occupational and Environmental Health), Nobuo Nagai (Nagahama Institute of Bio-Science and Technology), Ken-ichiro Nakajima (Nagoya University), Koichi Nakajo (Jichi Medical University), Hisako Nakayama (Tokyo Women's Medical University), Madoka Narushima (National Institute for Physiological Sciences), Tomomi Nemoto (National Institute for Physiological Sciences), Fumiaki Nin (Gifu University), Haruo Ogawa (Kyoto University), Fumitaka Osakada (Nagoya University), Makoto Osanai (Osaka University), Tetsuya Shiuchi (Tokushima University), Yoshiro Suzuki (Iwate Medical University), Akiko Taguchi (National Center for Geriatrics and Gerontology), Noriko Takeshita (University of Shizuoka), Hiroko Takeuchi (Osaka University), Akiyuki Taruno (Kyoto Prefectural University of Medicine), Kunichika Tsumoto (Kanazawa Medical University), Miho Watanabe (Hamamatsu University), Maki Yamaguchi (The Jikei University), Ryusuke Yoshida (Okayama University), Takuto Fujii (University of Toyama), Hiroshi Kuba (Nagoya University), Motohiko Sato (Aichi Medical University)

JPS

Yukio Ago (Hiroshima University), Masataka Asagiri (Yamaguchi University), Yasu-Taka Azuma (Osaka Metropolitan University), Yuji Hara (University of Shizuoka), Yasunori Hayashi (Kyoto University), Eiichi Hinoi (Gifu Pharmaceutical University), Katsuya Hirano (Kagawa University), Masanori Hirashima (Niigata University), Kenzo Hirose (The University of Tokyo), Yuji Ikegaya (The University of Tokyo), Yumiko Imai (National Institutes of Biomedical Innovation, Nutrition and Health), Keisuke Ishizawa (Tokushima University), Yoichiro Isohama (Tokyo University of Science), Yasunari Kanda (National Institute of Health Sciences), Shuji Kaneko (Kyoto University), Shiho Kitaoka (Hyogo Medical University), Yuji Kiuchi (Showa University), Shigeki Kiyonaka (Nagoya University), Ryuta Koyama (The University of Tokyo), Satoru Koyanagi (Kyushu University), Keiji Kuba (Kyushu University), Junko Kurokawa (University of Shizuoka), Takahiro Masuda (Kyushu University), Rieko Muramatsu (National Center of Neurology and Psychiatry), Taku Nagai (Fujita Health University), Kazuhiro Nakamura (Nagoya University), Tomoe Nakamura-Nishitai (Wakayama Medical University), Eiichiro Nishi (Shiga University of Medical Science), Keizo Nishikawa (Doshisha University), Yuhei Nishimura (Mie University), Akira Nishiyama (Kagawa University), Yutaro Obara (Yamagata University), Tadashi Saigusa (Nihon University), Takuya Sasaki (Tohoku University), Tsuyoshi Shuto (Kumamoto University), Tappei Takada (The University of Tokyo), Masamichi Takami (Showa University), Sayaka Takemoto-Kimura (Nagoya University), Kazuhiro Tamura (Tokyo Univ. of Pharmacy & Life Sciences), Hiroki Ueda (The University of Tokyo), Takashi Uehara (Okayama University), Yasuhiro Uezono (The Jikei University), Minoru Wakamori (Tohoku University), Hisao Yamamura (Nagoya City University), Toshiko Yamazawa (Jikei University School of Medicine), Masanori Yoshizumi (Nara Medical University)

Budget

Income

Description	Amount
1. Registration fee (Advance & On-site)	52,450,000
2. Information exchange meeting	4,580,000
3. Seminar	16,600,000
4. Exhibition	16,115,000
5. Advertising	1,848,000
6. Contribution	14,000,000
Total	105,593,000

Expenditure

Description	Amount
1. Preparation	17,270,800
2. On-site operation	80,472,420
3. Post-meeting	770,000
4. Outsourcing	5,254,650
5. Reserve fund	1,825,130
Total	105,593,000

Bank account for payment

Bank: MUFG Bank

Branch: Jinbocho branch (013)

Account type: Savings account

Account number: 1714419

Account name: 第98回日本薬理学会年会 年会長 赤羽 悟美
ﾀﾞｲｷョウｼﾞ ﾕﾜﾁｶｲﾆﾝﾖﾝﾔｸﾘｶﾞ ﾂｶｲﾈﾝｶｲ ﾏｶﾈ ﾏﾐ

Cancellation policy

Once an application has been received, it cannot be canceled unless the organizing committee recognizes that the cancellation is due to reasons beyond the control of the applicant. If the organizing committee approves the cancellation, please submit the reasons for cancellation in writing, and pay the cancellation fee based on the date of receipt.

[Cancellation Fee]

When a cancellation notice is received by the application deadline ... **50%** of the amount billed

When a cancellation notice is received on or after the application deadline ...**Full amount** billed

* The annual meeting may be closed early, postponed, curtailed, relocated, or cancelled due to force majeure such as natural disasters, acts of terrorism, spread of infectious diseases, or other reasons beyond the control of the organizer. Sponsoring companies will not be compensated for any damages caused by these changes.

* If the annual meeting is cancelled, or the format of the annual meeting is changed due to the aforementioned reasons, the organizer will deduct the cost of preparation from the sponsorship fee and bill or refund the difference to the sponsoring companies. The amount will be calculated retroactively from the dates of the annual meeting to the date the organizer cancels or changes the format.

Transparency guideline for the relation between corporate activities and medical institutions

In order to improve the transparency and reliability of the relationship between the activities of pharmaceutical companies and medical institutions, the organizer agrees that the payment of sponsorship fees made by each company for the meeting will also be disclosed when they disclose on their websites information related to research funds, donations, social expenses, etc. for medical institutions and medical personnel. Please note that the organizer will not sign or seal the agreement form regarding this matter.

Qualified invoice issuer registration number (Invoice system)

The Japanese Pharmacological Society has registered as a "Qualified invoice issuer". The registration number to include on the invoice is as follows;

The Japanese Pharmacological Society

Gakkai Center bldg, 2-4-16 Yayoi, Bunkyo-ku, Tokyo 113-0032, Japan

T7010005018096

Schedule (Tentative)

As of October, 2023

	8	9	10	11	12	13	14	15	16	17	18	19
March 17		Symposium 8:30-10:20		Plenary lecture 10:30-11:30		Luncheon seminar 12:40-13:30	Plenary lecture 13:40-14:40		Symposium 14:50-16:40		Symposium 16:50-18:40	
		Educational lecture Special lecture 8:30-10:20							Special lecture 14:50-16:40			
	Set up	Poster display 9:00-11:30		Poster presentation 11:30-12:30		Poster display 12:30-18:40						Removal
		Exhibition 9:00-17:00										
March 18		Symposium 8:30-10:20		Plenary lecture 10:30-11:30		Luncheon seminar 12:40-13:30	Plenary lecture 13:40-14:40		Symposium 14:50-16:40		General assembly 16:50-17:50	
		Award lecture Special lecture 8:30-10:20							Special lecture 14:50-16:40			
	Set up	Poster display 9:00-11:30		Poster presentation 11:30-12:30		Poster display 12:30-18:40						Removal
		Exhibition 9:00-17:00										
March 19		Symposium 8:30-10:20		Plenary lecture 10:30-11:30		Luncheon seminar 12:40-13:30	Plenary lecture 13:40-14:40		Symposium 14:50-16:40			
		Educational lecture Special lecture 8:30-10:20							Special lecture 14:50-16:40			
	Set up	Poster display 9:00-11:30		Poster presentation 11:30-12:30		Poster display 12:30-16:40					Removal	
		Exhibition 9:00-16:40									Removal	

Number of sessions (Tentative)

- Plenary lecture : 6
- Special lecture : 6
- Educational lecture : 2
- Award lecture : 1
- Symposium : 38

Luncheon seminar

Seminars can be held in the lecture rooms during the lunchtime.

Dates	March 17 – 19, 2025 12 : 00 - 12 : 50 (Tentative) Presentation time: 50 min * Up to 5 seminars per day are held in parallel.	
No. of slots available	Up to 15	
Fee	[500 – 600 seats] 1,650,000JPY (Incl. tax)	[100 – 150 seats] 1,100,000JPY (Incl. tax)
Application deadline	November 1 , 2024	

Exhibition

* The exhibition will be held in the same area as the poster presentations.

Dates	March 17 – 19, 2025			
Venue	Exhibition Hall 8, International Exhibition Hall, Makuhari Messe			
Fee	Type A : Instruments, reagents, disposables, contracted services, computer systems etc. Type B : Related books and translation/proofreading services Type C : Universities and public research institutions etc. University venture companies display the name of the university.			
	Fee (Per booth/Incl. tax)	Type A	Type B	Type C
	Primary	330,000JPY	33,000JPY	165,000JPY
	Secondary	385,000JPY	44,000JPY	165,000JPY
Application deadline	Primary: October 31, 2024 / Secondary: November 29, 2024			

Pre-/Post symposium presentation

A 3-minute time frame will be provided before or after symposium to give a presentation.

Eligibility	Exhibitors or luncheon seminar co-hosts Presentations may be made by one company before or after the symposium and should be no longer than 3 minutes. Choices of the symposium will be handled on a first-come-first-served basis. You may apply to more than one symposium.
Fee	154,000JPY (Incl. tax) / Symposium
Application deadline	November 29, 2024

Advertising in the program booklet

A5 size booklet

Rate	Black & White / 1 page 99,000JPY (Incl. tax) ~
-------------	-------------------------------------------------------

Application deadline	November 29, 2024
-----------------------------	-------------------

Ad submission deadline	December 6, 2024
-------------------------------	------------------

Banner advertising on the annual meeting website

Banner ads will be embedded on the annual meeting website.

No. of slots available	10
-------------------------------	----

Rate	132,000JPY (Incl. tax) /banner
-------------	---------------------------------------

Application deadline	When application reaches 10 or January 31, 2025
-----------------------------	-------------------------------------------------

On-screen advertising

On-screen ads will be projected on the screen of the lecture rooms while they are not in use (Excluding before luncheon seminars).

No. of slots available	10
-------------------------------	----

Projection time	30 seconds/slot (Rotation)
------------------------	----------------------------

Ad data	PowerPoint (.pptx) or MP4 (.mp4)
----------------	----------------------------------

Rate	132,000JPY (Incl. tax) /slot
-------------	-------------------------------------

Application deadline	When application reaches 10 or January 31, 2025
-----------------------------	-------------------------------------------------

Luncheon seminar - 1

Luncheon seminars will be co-hosted by companies and APPW2025 as part of the annual meeting program.

Dates	<p>March 17 – 19, 2025 Presentation time: 50 min (At lunch time) 3-5 seminars per day are held in parallel. Subject to change depending on the number of applications. * Time slot may change slightly due to scheduling reasons.</p>
Venue	International Conference Hall, Makuhari Messe (Lecture rooms)
Eligibility	Basically, exhibitors only * Fee varies for non-exhibitors.
No. of slots available	Up to 15
Fee	<p>Room, equipment (projector, screen, microphones and audio equipment etc.) are included. Lunch is not included.</p> <ul style="list-style-type: none"> ● 500-600 seats 1,650,000JPY (Incl. tax) + Lunch ● 100-150 seats 1,100,000JPY (Incl. tax) + Lunch <p>As a rule, requests for the seminar date will be accepted in the order of application date. However, please note that the request may not be granted due to program considerations.</p>
Application	Please fill out the application form and send it to the secretariat below by e-mail.
Application deadline	November 1, 2024
Payment	<p>An invoice will be sent after the application. Please make a payment before the due date written on the invoice. *Please cover the bank transfer fees.</p>
Disclosure of information	We agree that sponsors will publicize their contributions.
Contact	<p>APPW2025 Sponsorship Secretariat (c/o A&E Planning Co., Ltd.) 6F, Shin-Osaka Grand Bldg., 2-14-14, Miyahara, Yodogawa-ku, Osaka 532-0003, JAPAN E-mail : e_appw2025@aeplan.co.jp</p>

● What is included in the fee

- 1) Room
- 2) Basic equipment and facilities (LCD projector, screen, audio equipment, and laser pointer)
- 3) Desk light, bell, stopwatch, and a table for distributing handouts, box lunches, etc.
- 4) Anteroom (Available at a specific time on the day of the seminar.)
- 5) 3 meeting passes

*** Note: If a speaker you are requesting is a member of JAA, PSJ, or JPS, we kindly ask the speaker to follow the normal registration procedures.**

- 6) 10 staff badges (Besides exhibition staff badge).
- 7) 1 program booklet

If more than one company applies for the same slot, items 5) and 7) above will be distributed to the representative company.

● What is NOT included in the fee

- 1) Equipment for filming and recording. Please bring your own PC for the presentation and check the connection and performance of the LCD projector.
- 2) Operating staff: For distributing box lunches, lighting and announcement
- 3) Box lunch: The quantity will be determined by the co-hosting companies. The secretariat will then place an order for the total number.
(Box lunch fee *Tentative: 1,540 JPY/box (Incl. tax) with paper-packed green tea. To be invoiced separately by the secretariat.)
- 4) Hospitality fees: Transportation including travel, honoraria, lodging, etc., for speakers and chairs.
- 5) Signage: Signs in front of the room, name boards, etc.

◆ Distribution of seminar tickets : Only on the day of seminar

- | | |
|-------------------------|---------------------------------------------------------------------------------------------------------------------------------------------------------------------------------------------------------------------|
| Distribution on the day | <ul style="list-style-type: none">• Tickets will be distributed by the secretariat at the luncheon seminar desk on the morning of the seminar.• Tickets will be prepared by the secretariat. |
|-------------------------|---------------------------------------------------------------------------------------------------------------------------------------------------------------------------------------------------------------------|

- | | |
|------|-------------------------------------------------------------------------------------------------------------------------------------------------------------------------------------------------------------------------------------------------|
| Note | <ul style="list-style-type: none">• Box lunches will be provided in exchange for tickets.• Tickets will become invalid after the seminar start time and box lunches will be provided to those attending without tickets. |
|------|-------------------------------------------------------------------------------------------------------------------------------------------------------------------------------------------------------------------------------------------------|

◆Remarks

- Language
Japanese or English
- Co-hosts are welcome to promote the seminar by clearly stating "Co-hosted by APPW2025".
Please contact us if you would like to promote the seminar outside of brochures and your company website.
- The date, time and room will be decided by the organizing committee in the order of application, and the secretariat will notify the co-hosts. Please make sure to inform the secretariat at least the name of speaker and his/her affiliation by the deadline for scheduling.

◆Title & Abstract

The title and abstract of the seminar will be published in the program booklets and posted on the website too.

- Please submit
- 1) Abstract for program booklet (Deadline: Mid-November, 2024)
 - 2) Title and Name of speaker
 - 3) Abstract
- *The details will be informed after application.

◆Others

- Distribution of flyers and other materials by seminar co-hosts is limited to the morning of the day of the seminar. Distribution is permitted only inside the International Conference Hall, Makuhari Messe (on the floor in use). Outside is prohibited.
- Luncheon seminars will be held as part of the program and only registered participants will be able to attend the seminars.
- The cost of the Internet environment at the venue and the cost of distribution equipment are not included in the fee. Please contact us for details.
- The start time of the seminar is subject to change depending on the progress of the program prior to the seminar.

Co-hosted / Sponsored symposium (For public institutions / academia) - 1

Co-hosted / Sponsored symposia will be co-organized by companies and APPW2025 as part of the annual meeting program.

Dates	<p>March 17 – 19, 2025 Session time: 1 hour and 50 min * Time slot may change slightly due to scheduling reasons.</p>
Venue	International Conference Hall, Makuhari Messe (Lecture rooms)
Eligibility	Basically, public institutions or academia * If not applicable, please contact us.
No. of slots available	Up to 10
Fee	<p>Room, equipment (projector, screen, microphones and audio equipment etc.) are included.</p> <ul style="list-style-type: none"> ● 500 seats 291,837JPY (Incl. tax) ● 120 seats 172,150JPY (Incl. tax) <p>Please note that the request may not be granted due to program considerations.</p>
Application	Please fill out the application form and send it to the secretariat below by e-mail.
Application deadline	November 1, 2024
Payment	<p>An invoice will be sent after the application. Please make a payment before the due date written on the invoice. *Please cover the bank transfer fees.</p>
Disclosure of information	We agree that sponsors will publicize their contributions.
Contact	<p>APPW2025 Sponsorship Secretariat (c/o A&E Planning Co., Ltd.) 6F, Shin-Osaka Grand Bldg., 2-14-14, Miyahara, Yodogawa-ku, Osaka 532-0003, JAPAN E-mail : e_appw2025@aeplan.co.jp</p>

● What is included in the fee

- 1) Room
- 2) Basic equipment and facilities (LCD projector, screen, audio equipment, and laser pointer)
- 3) Desk light, bell, stopwatch, and a table for distributing handouts, box lunches, etc.
- 4) Operating staff
- 5) Publication on the website, in the program booklets, and in the program search system "Confit"
- 6) Sign in front of the room etc.

● What is NOT included in the fee

- 1) Equipment for filming and recording. Please bring your own PC for the presentation and check the connection and performance of the LCD projector.
- 2) Food and drink
- 3) Hospitality fees: Transportation including travel, honoraria, lodging, etc., for speakers and chairs.

● Date & Room

The date, time and room will be decided by the organizing committee

● Title & Abstract

The title and abstract of the symposium will be published in the program booklets and posted on the website too.

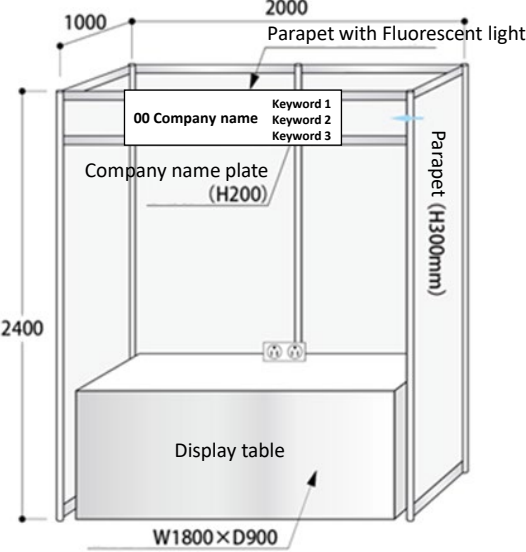
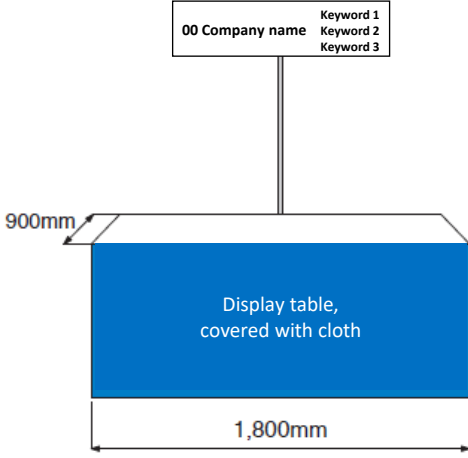
Dates	<p>March 17 – 19, 2025 9:00 – 17:00 (Tentative)</p> <p>* The program will be posted on the meeting website as soon as it is finalized.</p>
Venue	Exhibition Hall 8, International Exhibition Hall, Makuhari Messe
Applicable exhibits	<p>Instruments, reagents, disposables, computer systems including software and database, and contracted services related to life science research.</p> <p>Joint usage, introduction, and recruitment of universities and research institutions.</p> <p>Related books and services.</p>
Application	Please fill out the application form and send it to the secretariat below by e-mail.
Application deadline	<p>Primary: October 31, 2024 / Secondary: November 29, 2024 (Tentative)</p> <p>If the number of applications reaches the number of available booths, the application will be closed even before the deadline.</p>
Invoice	<ul style="list-style-type: none"> • An invoice will be sent after an application is received. • Please make a payment before the due date written on the invoice. • Bank transfer fees should be covered by the exhibitors.
Payment due date	<p>Please be sure to notify us if the payment cannot be made by the due date. If we do not receive the payment by the due date without notice, your application will be considered cancelled and you will be required to pay a cancellation fee.</p>
Dates of move-in / move-out (Tentative)	<p>Move-in: March 16, 2025 14:00 - 17:00</p> <p>Move-out: March 19, 2025 After the exhibition</p> <p>* The above schedule is tentative, please be sure to check the confirmation which will be sent around 1 - 1.5 months before the meeting.</p>
Contact	<p>APPW2025 Sponsorship Secretariat (c/o A&E Planning Co., Ltd.)</p> <p>6F, Shin-Osaka Grand Bldg., 2-14-14, Miyahara, Yodogawa-ku, Osaka 532-0003, JAPAN</p> <p>E-mail : e_appw2025@aeplan.co.jp</p>

◆ Booth type & Fee

Application deadline: Primary **October 31, 2024 (Tentative)**
 Secondary **November 29, 2024 (Tentative)**

If the number of applications reaches the number of available booths, the application will be closed even before the deadline.

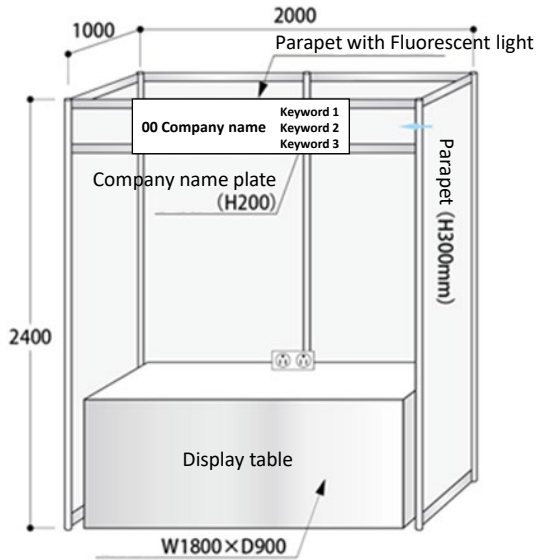
Number of booth available: 60 booths

<p>● Type A: Primary 330,000 JPY/booth (Incl. tax) Secondary 385,000 JPY/booth (Incl. tax)</p>	<p>● Type B: Primary 33,000 JPY/booth (Incl. tax) Secondary 44,000 JPY/booth (Incl. tax)</p>
<p>Applicable exhibits: Instruments, reagents, disposables, computer systems including software and database, and contracted services related to life science research. Joint usage, introduction, and recruitment of universities and research institutions</p>	<p>Applicable exhibits: Books related to life science research Publishers, bookstores, and translation / proofread services related to life science research</p>
	
<ul style="list-style-type: none"> ● Booth size: W2,000×D1,000×H2,400mm (Inside W1,980×D990) ● Furniture: Display table (W1,800×D900×approx.H700mm), Company name plate (with 3 keywords), Lighting (equiv. 40W) and 1 chair (The no. of chairs depends on the no. of booths applied for.) ● Back and side panels are system panels. The tabletop is covered with white cloth and four sides wrapped with blue cloth. ● Location of the booths cannot be designated at the time of application. If you wish to have a booth side by side with your partner company, please notify the sponsorship secretariat in the "Remarks" field of the application form. ● Carpets are limited to 300 mm in front of the booth and may not be placed in the aisle even in a cross-aisle booth. ◆ 1 meeting pass will be provided to the Type A exhibitors, regardless of the number of booths they applied for. ◆ 1 program booklet per application will be provided. ◆ 4 exhibition staff badges per booth will be provided. 	<ul style="list-style-type: none"> ● Booth size: W1,800 x D900 x H700 mm ● Furniture: Display table (W1,800×D900×approx.H700mm), Company name plate (with 3 keywords) and 1 chair (The no. of chairs depends on the no. of booths applied for.) ● The tabletop is covered with white cloth and four sides wrapped with blue cloth. ◆ 4 exhibition staff badges per booth will be provided.
<p>Application is required to use electricity. If you need electricity (100V), please apply separately after application. (Information will be provided approx. 1 month before the exhibition).</p>	

● **Type C (Academic type):** Primary/Secondary **165,000 JPY/booth** (Incl. tax)

Applicable exhibits:

Universities and research institutions of public organizations are eligible for Type C. University venture companies are also eligible, but must include the name of the university on the company name board.



● Booth size: W2,000×D1,000×H2,400mm
(Inside W1,980×D990)

● Furniture:

Display table (W1,800×D900×approx.H700mm),
Company name plate (with 3 keywords),
Lighting (equiv. 40W) and 1 chair (The no. of chairs depends on the no. of booths applied for.)

● Back and side panels are system panels. The tabletop is covered with white cloth and four sides wrapped with blue cloth.

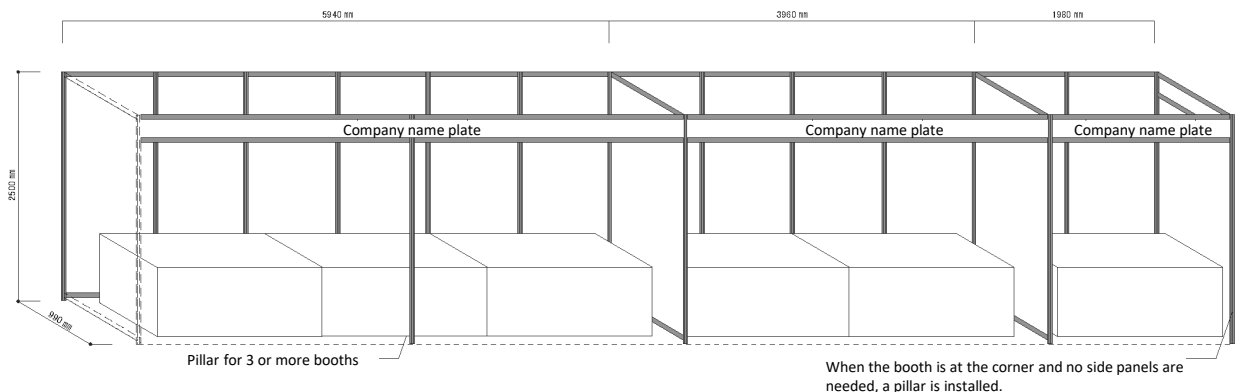
- ◆ 4 exhibition staff badges per booth will be provided.
- ◆ 1 program booklet per application will be provided.

* Location of the booths cannot be designated at the time of application. If you wish to have a booth side by side with your partner company, please notify the sponsorship secretariat in the “Remarks” field of the application form.

* The specifications of the booth will be the same as for Type A

Application is required to use electricity. If you need electricity (100V), please apply separately after application. (Information will be provided approx. 1 month before the exhibition).

● Example of multiple booth application



◆ Cancellation policy

Once an application has been received, it cannot be canceled unless the organizing committee recognizes that the cancellation is due to reasons beyond the control of the applicant. If the organizing committee approves the cancellation, please submit the reasons for cancellation in writing, and pay the cancellation fee based on the date of receipt.

[Cancellation Fee]

When a cancellation notice is received by November 29 ... **50%** of the amount billed

When a cancellation notice is received on or after November 30 ... **Full amount** billed

* The annual meeting may be closed early, postponed, curtailed, relocated, or cancelled due to force majeure such as natural disasters, acts of terrorism, spread of infectious diseases, or other reasons beyond the control of the organizer. Sponsoring companies will not be compensated for any damages caused by these changes.

* If the annual meeting is cancelled, or the format of the annual meeting is changed due to the aforementioned reasons, the organizer will deduct the cost of preparation from the sponsorship fee and bill or refund the difference to the sponsoring companies. The amount will be calculated retroactively from the dates of the annual meeting to the date the organizer cancels or changes the format.

◆ Infection prevention measures

The secretariat will take infection prevention measures, but we also ask you to take infection prevention measures at your booth, etc.

◆ Booth assignment

After the application deadline, booths will be assigned based on the type, shape, and weight of the exhibits and the number of booths applied for, and the exhibitors will be notified in the confirmation. Please note that there will be no exhibitor briefing.

* If you wish to set up a booth side-by-side with your affiliate or associate companies, please inform the secretariat by the application deadline.

◆ Use of display table

Each booth is equipped with a display table. If you do not need it, please let us know the number of booth that do not need a display table on the application form.

◆ Exhibit management

Please note that the exhibitors are responsible for the management of their own exhibits, and the secretariat will not compensate for any damages caused by thefts, losses, fire or inevitable accidents during the exhibition.

◆ Others

Distribution of flyers, catalogs, sample products, etc., other than in front of your own booth (inside and outside the buildings where the exhibition and lectures take place) is prohibited. Your cooperation would be highly appreciated. However, there will be some exceptions as below.

- Luncheon seminar co-hosts (Please refer to the "Luncheon seminar".)
- Exhibitors who applied after the application deadline and have been certified by the organizing committee (Fee required, distribution location will be determined by the secretariat.)

We call for companies who wish to advertise their companies, products, or exhibits by giving a presentation before or after a symposium.

You may distribute materials and collect questionnaires at the entrance and exit of the room you are sponsoring.

Questionnaires can be distributed by displaying a slide in a presentation or by displaying a QR code in a video.

Please note, however, that materials and questionnaires cannot be placed on desks during breaks.

Eligibility	Exhibitors or Luncheon seminar co-hosts
Before you apply	<ul style="list-style-type: none"> ▪ One company can exclusively give a presentation for a symposium and the presentation time is 3 minutes. ▪ Choices of a symposium will be handled on a first-come-first-served basis. ▪ Flyers can be distributed at the room entrance during the symposium you are sponsoring. ▪ You may apply to more than one symposium.
Presentation format	<p>[Give a presentation] Only on-site There are no specific rules for presentation format as long as it is within the allotted time. Details will be notified after application.</p> <p>[Project a video] Please send a video before the meeting. Audio output is available.</p>
Fee	154,000 JPY (Incl. tax)
Application	Please fill out the application form and send it to the secretariat below by e-mail.
Application deadline	November 29, 2024

* The details of symposia will be released on the meeting website.

Advertisements - 1

APPW2025 accepts the following different types of advertisements.
Please make use of the advertising media APPW2025 offers.

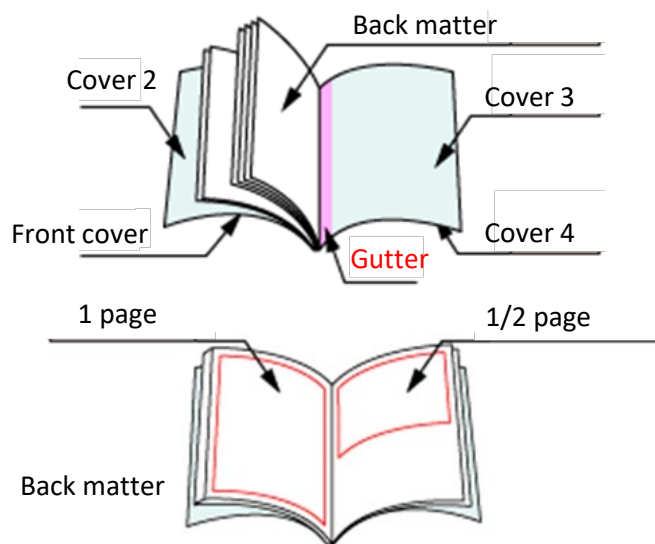
Advertising in the program booklet

【Overview】

Circulation Budget	6,000 (Tentative) 6,600,000 JPY (Incl.tax)
Date of issue	Early January, 2025
Application deadline	November 29, 2024
Ad submission deadline	December 6, 2024
Book size	A5 (210mm height × 148mm width)
Application	Please fill out the application form and send it to the secretariat below by e-mail.
Ad size	1 page: 180mm height × 125mm width 1/2 page: 85mm height × 125mm width Bleed : Not acceptable
Ad requirements	<ul style="list-style-type: none"> • Black & White or 4 colors • Please attach a print sample. * Print-ready data * If 4-color, please attach a 4-color print sample.
Format	Adobe Illustrator (.ai) <ul style="list-style-type: none"> • Please outline all fonts, and embed all images. • please specify the OS and the version of Illustrator used for creating the ad. • Proofreading will be performed by the printer. Please note that a proof sheet will not be sent to you.

【Rate】

Page	Rate (Incl.tax)
Cover 4 4 colors / 1 page	242,000 JPY
Cover 3 4 colors / 1 page	198,000 JPY
Cover 2 4 colors / 1 page	220,000 JPY
Back matter Black & White / 1 page	99,000 JPY
Back matter Black & White / 1/2 page	66,000 JPY



Banner advertising on the annual meeting website

Application deadline	January 31, 2025 * Closed when application reaches 10.
Rate	132,000 JPY /banner (Incl. tax)
Placement	Top of the top page of the meeting website
No. of slots available	Up to 10 You may apply to more than one banner.
Application	Please fill out the application form and send it to the secretariat below by e-mail.
Ad requirements	Size: W 200 × H 60 px Format: GIF (Animation and infinite loop available), JPEG * Please send the URL to be linked to the banner as well. The submitted ad can be replaced once.

Video banner advertising on the annual meeting website

Application deadline	January 31, 2025 * Closed when application reaches 5.
Rate	187,000 JPY /banner (Incl. tax)
Placement	Top of the top page of the meeting website
No. of slots available	Up to 5
Application	Please fill out the application form and send it to the secretariat below by e-mail.
Ad requirements	Embed YouTube video etc. * Please send the URL to embed. Please see YouTube for a click-through rate.

On-screen advertising

Application deadline	January 31, 2025
Rate	132,000 JPY /slot (Incl. tax)
Projection	On-screen ads will be projected on the screens in all rooms during breaks each day of the meeting. (Excluding before luncheon seminars)
No. of slots available	Up to 10 * You may apply to more than one slot.
Application	Please fill out the application form and send it to the secretariat below by e-mail.

Length: Up to 30 seconds per slot

OS: Windows 7 or later / Macintosh OS 10.4 or later is recommended

Application: Only PowerPoint

【Windows】 PowerPoint 2003 or later

【Macintosh】 PowerPoint 2004 or later

Aspect ratio: 16:9

Please check whether ad is properly displayed at this environment in advance.

Ad requirements

Font: *If other fonts are used, please be sure to embed the fonts.

Japanese font

【Windows】 MS Mincho, MS Gothic

【Macintosh OSX or later】 MS Mincho, MS Gothic, Hiragino

【Macintosh OS9.2 or earlier】 Light Mincho, Medium Gothic/Heisei Mincho,
Heisei Kaku Gothic, Osaka

English font

Times, Times New Roman, Helvetica, Arial, Symbol

Bank account for each sponsorship fee

The bank account for each sponsorship fee, excluding donations, is as follows.

Bank: MUFG Bank

Branch: Jinbocho branch (013)

Account type: Savings account

Account number: 1714419

Account name: 第98回日本薬理学会年会 年会長 赤羽 悟美
ﾀﾞｲｷﾕｰｼﾞﾝ ﾕｰﾊﾞﾁｶｲﾆﾎﾝﾔｸﾘｶﾞ ﾂｶｲﾆﾝｶｲｱｶﾊﾞ ﾏﾂﾐ

1) Name	Donation for APPW2025
2) Target amount	7,000,000 JPY
3) Prospective donor	Japan Pharmaceutical Manufacturers Association, Travel agencies, Foundations, and Companies
4) Period	December 1, 2023 – March 19, 2025
5) Use of donation	The donations will be used for the preparation, operation, and related events of APPW2025 which will be held at Makuhari Messe from March 17 to 19, 2025.
6) Application	<p>Please fill in the application form and send it to the secretariat of The Japanese Pharmacological Society, and transfer the donations to the bank account below.</p> <p>There are tax benefits for the donations made to the bank account below. Please contact the secretariat of The Japanese Pharmacological Society for details.</p>
7) Bank account for payment	Bank: MIZUHO BANK Branch: Hongo branch (075) Account type: Savings account Account number: 2892040 Account name: 公益社団法人日本薬理学会 コウエキヤクダンホウジニホンヤクリカケツカイ
8) Disclosure of information	We agree that donors will publicize their contributions.
9) Contact	APPW2025 Sponsorship Secretariat (c/o A&E Planning Co., Ltd.) 6F, Shin-Osaka Grand Bldg., 2-14-14, Miyahara, Yodogawa-ku, Osaka 532-0003, JAPAN E-mail : e_appw2025@aeplan.co.jp The Japanese Pharmacological Society Gakkai Center bldg, 2-4-16 Yayoi, Bunkyo-ku, Tokyo 113-0032, Japan E-mail. society@pharmacol.or.jp

[APPW2025] Application form for Sponsorship

The 130th Annual Meeting of the Japanese Association of Anatomists (JAA)

The 102nd Annual Meeting of the Physiological Society of Japan (PSJ)

The 98th Annual Meeting of the Japanese Pharmacological Society (JPS)

Date: _____

Company name		
Address	(Postal / ZIP code: _____) Address	
Person in charge	Name	TEL
	Division	FAX
	E-mail address	

■ Luncheon seminar

Please one of the following.

Apply Do not Apply

↓ If "Apply", please fill in the following fields as well.

Preferred capacity

500 - 600 seats 100 - 150 seats

Preferred date

1st choice:

March 17 March 18 March 19

2nd choice:

March 17 March 18 March 19

■ Exhibition

Please one of the following.

Apply Do not Apply

↓ If "Apply", please fill in the following fields as well.

Booth type

Type A Type B Type C

Number of booth _____ booth (s)

Electricity 100V W Need a breaker

Exhibits

Please fill in if you have heavy exhibits or any questions about exhibiting.

--

Remarks

Please fill in if any.

■ Pre-/Post symposium presentation

Please one of the following.

Apply Do not Apply

↓ If "Apply", please specify the symposium you wish to sponsor.

1st choice:

Session No.:

Session Title :

Organizer:

2nd choice:

Session No.:

Session Title :

Organizer:

■ Advertisements**Advertising in the program booklet**

Please any of the following.

- Cover 4
- Cover 2
- Cover 3
- Back matter 1 page
- Back matter 1/2 page
- Do not apply

Banner advertising on the annual meeting website

Please one of the following.

Apply Do not apply

Video banner advertising on the annual meeting website

Please one of the following.

Apply Do not apply

On-screen advertising

Please one of the following.

Apply Do not apply

Contact

APPW2025 Sponsorship Secretariat (c/o A&E Planning Co., Ltd.)

6F, Shin-Osaka Grand Bldg., 2-14-14, Miyahara, Yodogawa-ku, Osaka 532-0003, JAPAN

E-mail : e_appw2025@aeplan.co.jp

[APPW2025] Application form for Donation

The 130th Annual Meeting of the Japanese Association of Anatomists (JAA)

The 102nd Annual Meeting of the Physiological Society of Japan (PSJ)

The 98th Annual Meeting of the Japanese Pharmacological Society (JPS)

【Send to】 The secretariat of The Japanese Pharmacological Society

→ society@pharmacol.or.jp

Application deadline: March 19, 2025

Date: _____

To Masahiko Watanabe, Keiji Naruse, Satomi Adachi-Akahane
Presidents of APPW2025

■ Donor (Corporate · individual) * Please circle one.

Company name / Name

Address (Postal / ZIP code: _____)

Person in charge

* For corporate

Position

* For corporate

TEL

FAX

E-mail

We hereby donate for APPW2025 as follows;

- 1 Amount of donation JPY
- 2 Preferred use of donation For the preparation, operation, and related events of APPW2025
- 3 Scheduled date of transfer

Bank account for payment

Bank	MIZUHO BANK
Branch	Hongo branch (075)
Account number	2 8 9 2 0 4 0
Account name	公益社団法人日本薬理学会 コウエキシヤダ ヌホウジ ヌニホンヤクリガ ツカイ